
Community strategies to support HIV Care for pregnant women and HIV-infected Children

Dr. Eliud Mwangi
Senior Program officer
ICAP, Kenya
16. April 2008



ICAP

International Center for AIDS
Care and Treatment Programs

MAILMAN SCHOOL OF PUBLIC HEALTH
Columbia University

Background

- In Kenya the National strategy emphasizes the importance of community in the support of health service delivery; ICAP is developing strategies in line with this policy
- Most HIV programs lay more emphasis on patients on ART and yet the defaulter rates are higher among those patients on care
- Most health facilities lack adequate human resource to deliver consistent comprehensive care
- Establishment of Community Centres for HIV care will empower the community to take charge of their own health and improve the quality of care



ICAP

International Center for AIDS
Care and Treatment Programs

MAILMAN SCHOOL OF PUBLIC HEALTH
Columbia University

Objectives

- To improve quality of care through decentralization of health services
- To empower PLWH to take charge of their health condition
- To improve patients' adherence to HIV care thus reducing defaulters
- To reduce morbidity and mortality among PLWH due to timely diagnosis and treatment of OI
- To reduce stigma in the community resulting in increased uptake of HIV services
- To involve Community in creation of sustainable HIV care



ICAP

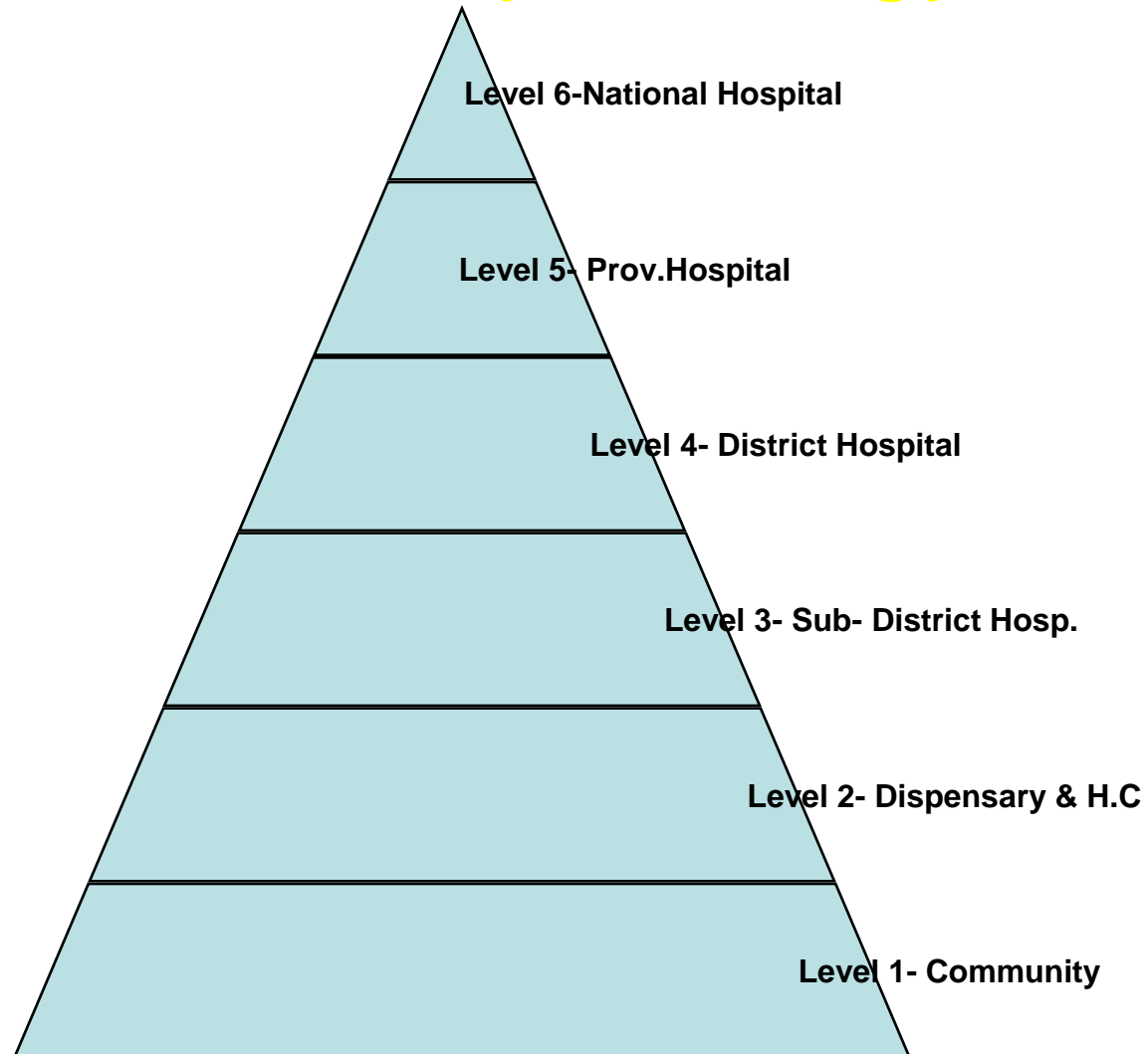
International Center for AIDS
Care and Treatment Programs

MAILMAN SCHOOL OF PUBLIC HEALTH
Columbia University

Community Strategy

- Involvement of Ministry of Health and opinion leaders in the community
- Integration with the National community strategy
- Establish Community Care Centers near Health Centers
- Train and mentor PLWH as leaders of these Centers
- Empowerment of PLWH to establish IGAs
- Stigma reduction

Community Strategy



ICAP

International Center for AIDS
Care and Treatment Programs

MAILMAN SCHOOL OF PUBLIC HEALTH
Columbia University

Comprehensive care package

At the Hospital

- Patients' work up
- ART
- Rx for OIs
- CTX and Multivitamins
- Laboratory inv.
- TB screening
- Growth monitoring
- PMTCT intervention
- EID

At the community Centre

- Counseling- Adherence, nutrition, safer sex, infant feeding, PMTCT
- Psychosocial support- Pediatrics, adolescents, Pregnant women, breastfeeding mothers
- Community mobilization
- Family counseling and testing
- ITNs, safe water (chemical water treatment)
- Cough screening
- Defaulter tracing
- Referrals- CD4 counts, treatment of OIs immunizations, EID



ICAP

International Center for AIDS
Care and Treatment Programs

MAILMAN SCHOOL OF PUBLIC HEALTH
Columbia University

Resources

- Human resource- PLWH
- Space
- EIC materials- brochures, books
- Children play materials
- Nutritional demonstration materials
- TV/ Video to be used to disseminate information
- ITNs/ safe water methods



ICAP

International Center for AIDS
Care and Treatment Programs

MAILMAN SCHOOL OF PUBLIC HEALTH
Columbia University

Discussion points

- Health policy
- Costs effectiveness
- The ideal care package to be offered at the community centers



ICAP

International Center for AIDS
Care and Treatment Programs

MAILMAN SCHOOL OF PUBLIC HEALTH
Columbia University



THANK YOU



ICAP
International Center for AIDS
Care and Treatment Programs
MAILMAN SCHOOL OF PUBLIC HEALTH
Columbia University