

HIV Scale-Up: How HIV/AIDS Donors Can Do More for Women and Girls

Nandini Oomman, PhD
Director, HIV/AIDS Monitor
Center for Global Development

Columbia University's International Center for AIDS Care & Treatment
Programs (ICAP) HIV Scale-Up and Global Health Systems Symposium

December 1, 2009



Presentation Outline

- The Need for a Gender Focus
- Donor response to gender and top recommendations by donor
- HIV/AIDS Scale Up & HSS – what should be included to make programs more gender focused?

Why Focus on Women and Girls?

- In the 1980s a third of all people infected with HIV worldwide were women. By the 1990s, more than half were women and is still the case
- In sub-Saharan Africa, 61% of all people infected with HIV are women
- Women age 15-24 are the most vulnerable to infection
- HIV prevalence is 3.2% in young women compared with 1.1% in young men



Gender inequality is an important structural factor which is linked in various ways to HIV/AIDS risk and vulnerabilities for women and girls

What is the link between gender inequality and HIV?

- Gender norms
- Concepts of masculinity
- Gender-based violence
- Limited access to education, employment, and other economic opportunities
- Mothers and caregivers bear a greater burden than men

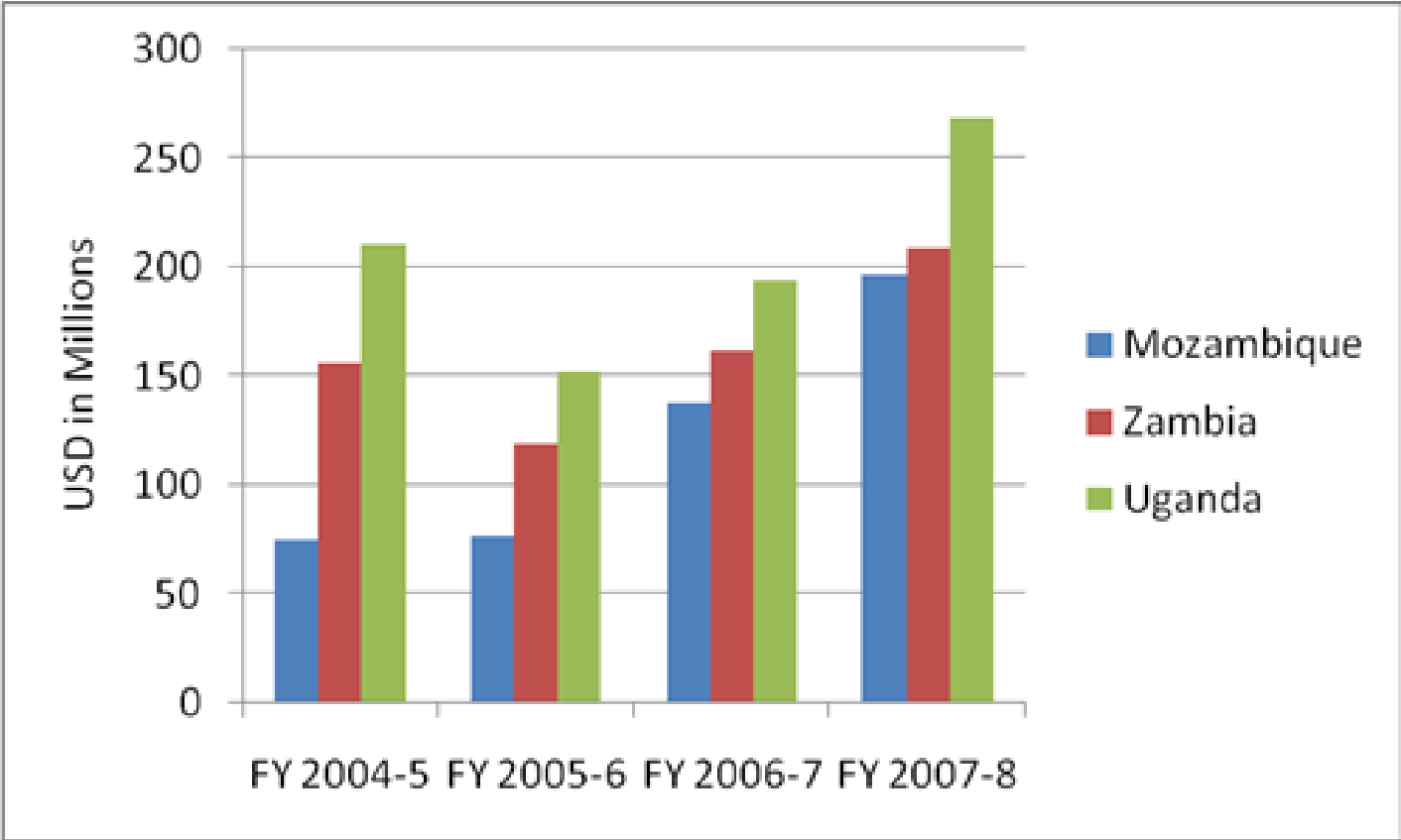
Source: Weiss & Rao Gupta, 2007; Barker 2006; Dunkle et al, 2007; Maman et al, 2000; Hallman, 2004; Luke 2003; Ogden, Esim & Grown, 2006

Presentation Outline

- The Need for a Gender Focus
- Donor response to gender and top recommendations by donor
- HIV/AIDS Scale Up & HSS – what should be included to make programs more gender focused?

Why do HIV/AIDS donors have to
change the way they address women
and girls?

PEPFAR Obligations by Year and Country



Source: pepfar.gov Obligation and Outlay Reports

But women have benefitted...

- 45% of women in need (verse 37% of men) received antiretroviral therapy
- 45% of pregnant women living with HIV received antiretroviral therapy to prevent mother-to-child transmission of HIV, up from 10% in 2004

Source: WHO, 2009

How are the three major donors and their recipient and subrecipient organizations addressing the vulnerabilities of women and girls in the HIV/AIDS epidemic in the three countries?

Key Guiding Criteria

- Analysis
- Programming
- Accountability
- Capacity

PEPFAR



Key findings: PEPFAR & Gender Responsiveness

- Has a global strategy highlighting five strategic areas and four global goals
- Added some gender analysis to inform Country Operational Plans
- Has supported innovated operations research and programming that uses a mix of gender-related strategies
- Is a leader in collecting sex-disaggregated data

Top Recommendation

Design gender programs and objectives based on country needs, not around global strategic areas or global gender goals



- Global strategies and goals drive programming to support prevention, treatment and care targets
- There are no country based objectives derived from five strategic areas and four goals
- Limited programming to address social, economic, physical and political factors that increase infection risk



- Global strategies and goals drive programming to support prevention, treatment and care targets
- There are no country based objectives derived from five strategic areas and four goals
- Limited programming to address social, economic, physical and political factors that increase infection risk



- Global strategies and goals drive programming to support prevention, treatment and care targets
- There are no country based objectives derived from five strategic areas and four goals
- Limited programming to address social, economic, physical and political factors that increase infection risk

PEPFAR Update

Global Health Initiative: a 6-Year, \$63 Billion Commitment

Program Focus

- People in Greatest Need
- Maintain Funding for Infectious Disease Programs (HIV/AIDS, Tb, Malaria, Infl., NTDs)
- Enhance Support for MCH, Family Planning, Nutrition

PEPFAR Update

Implementation Principles

- Women Centered Programming
- Strategic Integration, Coordination and Multilateral Collaboration
- Country Ownership and Partnership
- Health System Strengthening and Sustainability
- Improved Monitoring and Evaluation; Commitment to Research, Training, and Innovation

Presentation Outline

- The Need for a Gender Focus
- Donor response to gender and top recommendations by donor
- HIV/AIDS Scale Up & HSS – what should be included to make programs more gender focused?

Looking ahead: HIV/AIDS Scale Up and Gender Responsiveness

- Needs
- Perspectives
- Abilities

BOTH as CLIENTS and HEALTH CARE PROVIDERS

Health System Strengthening and Gender

- By WHO building block
 - Health Workforce
 - Health Financing
 - Medical Products/Technologies
 - Service Delivery
 - Information
 - Governance

Human Resources for Health

- Information on providers and the health work force should be disaggregated by sex
 - This speaks to the abilities and burdens on women in the health work force in a more gender responsive approach to programming

Health Governance and Financing

- Analysis of allocations and expenditures to examine the extent to which they respond to the health needs of women relative to men

The Bottom Line

- Responsiveness to gender inequality will be an integral part of any successful effort to make the three donor's more effective, especially for prevention
- In this global economic crisis, donors will be pressed to do more with less